



**United States Department of the Interior
Bureau of Land Management**

Eugene District Office
3106 Pierce Parkway Suite E
Springfield, OR 97477-7910

Phone: 541-683-6600

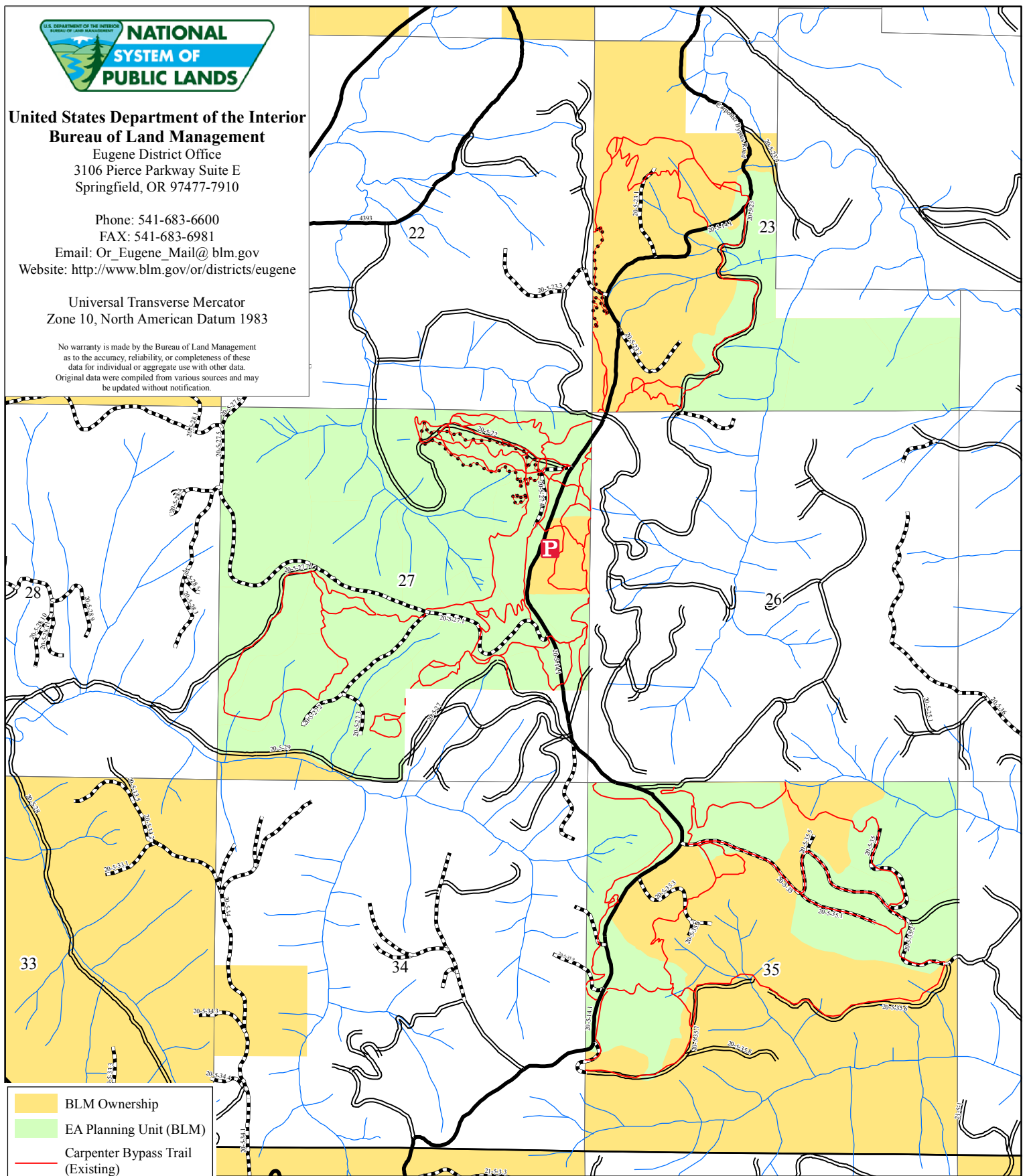
FAX: 541-683-6981

Email: Or_Eugene_Mail@blm.gov

Website: <http://www.blm.gov/or/districts/eugene>

Universal Transverse Mercator
Zone 10, North American Datum 1983

No warranty is made by the Bureau of Land Management as to the accuracy, reliability, or completeness of these data for individual or aggregate use with other data. Original data were compiled from various sources and may be updated without notification.



- BLM Ownership
- EA Planning Unit (BLM)
- Carpenter Bypass Trail (Existing)
- Carpenter Bypass Trail (Proposed Update)
- Road - Paved
- Road - Rocked
- Road - Other
- Stream
- P Proposed Parking Area

Letz Ride EA Scoping Map

T.20 S., R.5 W.

Metres

